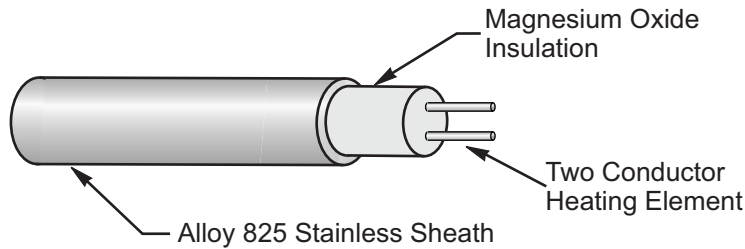


600V 2-CONDUCTOR TYPE KN ALLOY 825 SHEATH HEATING CABLE



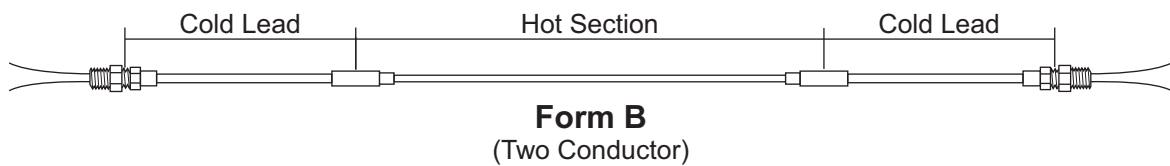
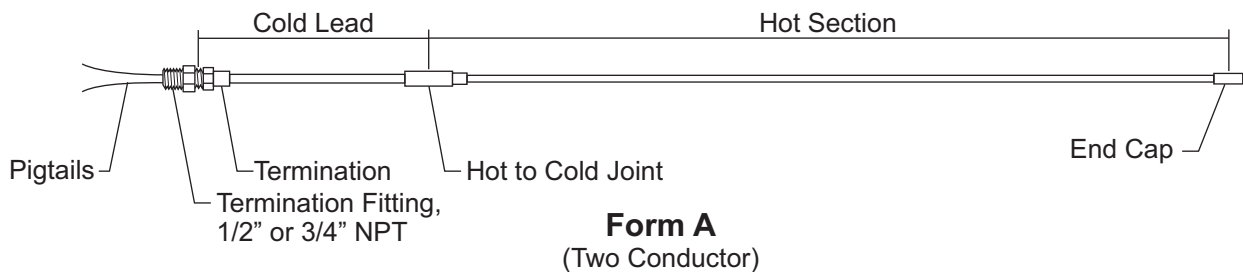
- Process Pipe Heating
- Freeze Protection
- Snow Melting
- Asphalt Heating
- Frost Heave Protection
- Tank & Vessel Heating
- Up to 1100°F Exposure Temperature

DESCRIPTION

Since 1969 Trasor has been a leading manufacturer of **MI** heating cables. **MI** cable is ideal for high power industrial and commercial heating applications. The stainless alloy 825 sheath has an excellent resistance to corrosive salts and chemicals. The cable is totally inorganic and will not deteriorate with age.

MI heating cables have series resistance conductors that provide constant wattage output along the entire length of the heater. **MI** heating cables have high temperature conductors allowing the heaters to operate at higher watt densities than other cables. All heating cables are factory fabricated to a specific length and rigorously tested to IEEE standards.

Heater Forms:

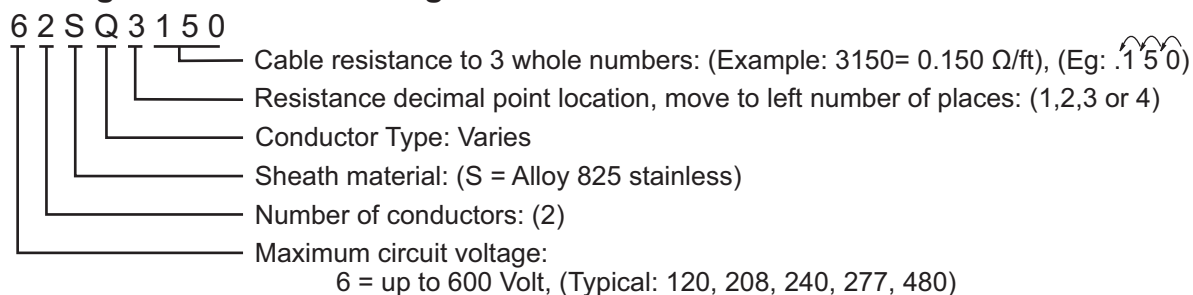


Type MI Heating Cable Specification:

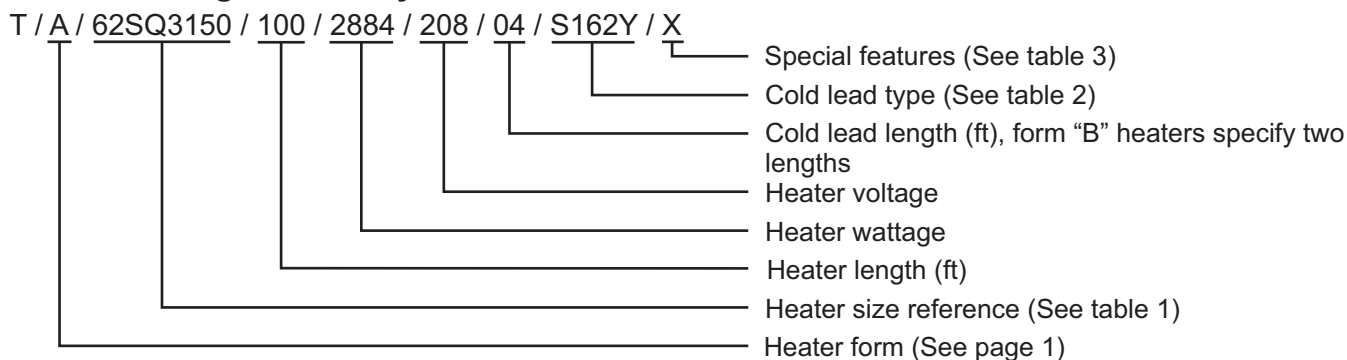
Table 1

| 2-Conductor, 300 Volt <small>(Max)</small> | | | | | |
|--|-------|--------|------------|-------|--------|
| Cable Size | Ω/ft | O.D. | Cable Size | Ω/ft | O.D. |
| 62SP4300 | 0.030 | 0.345" | 62SQ3700 | 0.700 | 0.265" |
| 62SP4400 | 0.040 | 0.325" | 62SA2100 | 1.00 | 0.255" |
| 62SP4500 | 0.050 | 0.310" | 62SF2200 | 2.00 | 0.255" |
| 62SQ4700 | 0.070 | 0.295" | 62SA2300 | 3.00 | 0.255" |
| 62SQ3100 | 0.100 | 0.280" | 62SA2400 | 4.00 | 0.240" |
| 62SQ3150 | 0.150 | 0.265" | 62SF2600 | 6.00 | 0.230" |
| 62SQ3200 | 0.200 | 0.255" | 62SF2750 | 7.50 | 0.238" |
| 62SQ3300 | 0.300 | 0.300" | 62SF2900 | 9.00 | 0.225" |
| 62SB3500 | 0.500 | 0.280" | 62SF1110 | 11.00 | 0.220" |

Heating Cable Size Decoding:



Heater Catalog Number System:



Heater Cold Lead:

Table 2

| Cold Leads ¹ | | | | |
|-------------------------|-----------------|----------|----------------------------|-------------------------|
| Type | Sheath Material | Max Amps | Pigtail Gauge ² | Gland Size ³ |
| S162Y | Stainless | 19 | 12 | 1/2" |
| S142Y | Stainless | 25 | 12 | 1/2" |
| S122Y | Stainless | 33 | 10 | 3/4" |
| S102Y | Stainless | 45 | 8 | 1" |

Notes:

1. Commonly used cold leads. Others are available for special applications.
2. Standard pigtails are 11" stranded type MTW.
3. Termination gland, male thread National Pipe Threads (NPT). Brass is standard.

Special Features:

Table 3

| Type | Description |
|------|---|
| C1 | 1/2" NPT reversed gland on hot to cold joint (N/A w/ -Q) |
| C2 | 3/4" NPT reversed gland on hot to cold joint (N/A w/ -Q) |
| CG1 | 1/2" NPT reversed cord grip on cold lead |
| E | Puller eye end cap |
| Q | High temperature adapter (N/A w/ -C1 or -C2) |
| R | Heater on non-returnable reel |
| S | Stainless steel fittings |
| T | Custom pigtail length (specify tail length in ft) Example: 20' tails = T20 |
| U | Div 2 termination fitting (brass is standard) |
| X | Special feature, specify |